

YOUR WORKERS COMPENSATION ENTITLEMENTS

SOUTH AUSTRALIA



Medical & related expenses

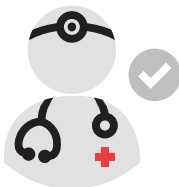
Post 1st July 2015



Medical expenses cease 12 months after weekly payments end.



Related expenses e.g. Home Help, travel etc. cease 12 months after weekly payments end.



Surgery: you can apply for future surgery, but it must be claimed while still receiving medical expenses.